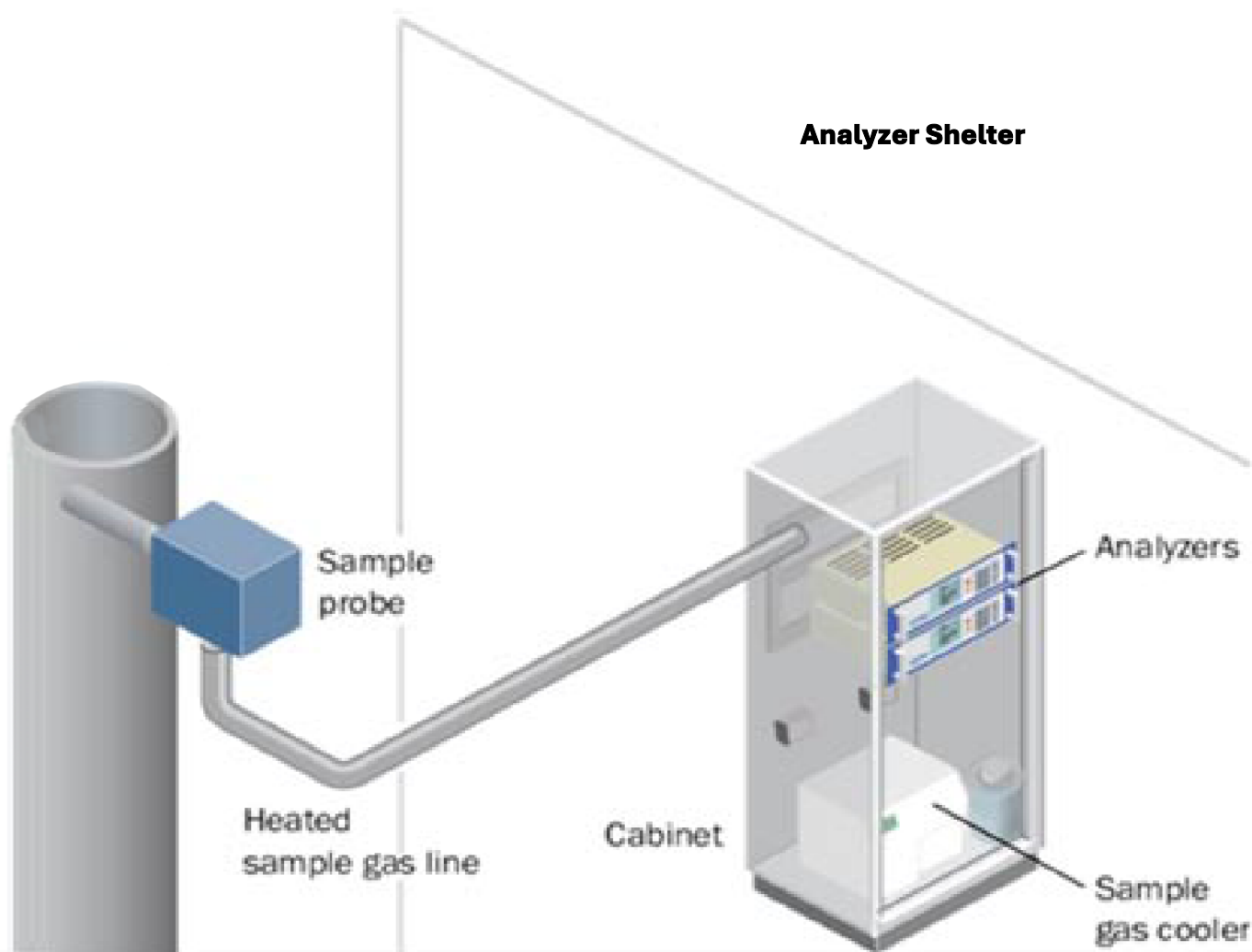
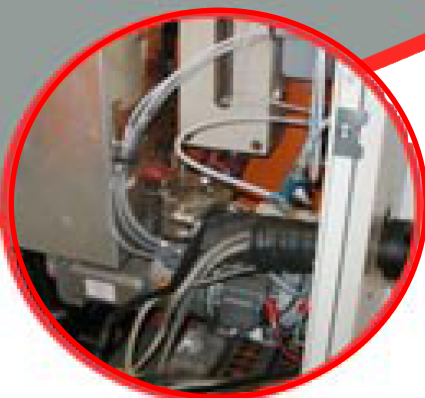




**CONTINUOUS
EMISSIONS
MONITORING
SYSTEMS (CEMS)
SAMPLE LINES**



Continuous Emissions Monitoring Sample Lines



Dilution

CEMS systems need an umbilical that can transport a dilution gas to the probe and return the diluted sample without the transport of one gas affecting the transport of the other. Flexotherm provides a full lines of umbilical's designed for the customer's system.



Extraction

Wet extractive CEMS systems require an umbilical that can handle temperatures above the dew point of sample, typically 320°F (160°C) to 425°F (218°C). The umbilical must also be able to withstand the thermal cycling seen caused by repetitive calibration cycles. Flexotherm has refined this design using state-of-the-art materials for robust umbilical system that is lightweight, flexible, installation-friendly, and virtually maintenance-free.



Mercury Integrity

Flexotherm Integrity series Mercury CEMS umbilical exceeds the needs of the Electric Power Industry. The Integrity Series design employs a high-efficiency thermal insulation which results in an umbilical that is 1/3rd the size and 30% lighter than an identical umbilical using standard fibrous glass thermal insulation. Continuous refinement has resulted in smallest, lightest and most efficient Mercury CEMS umbilical in the industry.



HCl or Ammonia Sampling

HCl or Ammonia Sampling: Flexotherm analyzer umbilical bundles designed for HCl or Ammonia sampling have components and capabilities matched to requirements of these demanding applications. Tubing, heater, and auxiliary lines are available to meet the requirements of all major monitoring systems.

Continuous Emissions Monitoring Sample Lines



Sample and Auxiliary Tubing Material

- Fluoropolymer
- Seamless & welded Stainless Steel
- Reinforced Fluoropolymer
- Corrugated Stainless Steel
- High Density Polyethylene



Thermal Insulation

- High Efficiency aerogel thermal insulation
- Low chloride non-wicking fibrous glass thermal insulation
- Kevlar thermal Insulation



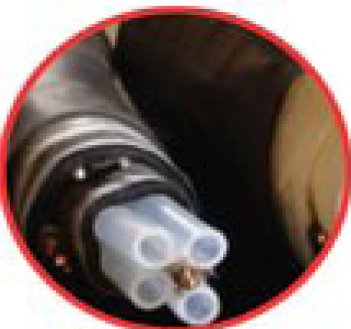
Outer Jacket Materials

- Lead-free UV Stabilized low temperature flame retardant PVC
- Halogen free UV Stabilized thermoplastic polyurethane
- High temperature UV stabilized thermoplastic polyolefin



Heating Cables

- Power Limiting
- Series Resistance Wire
- Constant Power Density (CPD)
- Low & High Temperature Self-Regulating



Auxiliary Items

- Single or multiple temperature sensors
- J and K thermocouple, 2 or 3 wire RTD
- Shielded sensor cables
- Communications Cables
- Fiber Optic Cables

WWW.NEPTCHINC.COM

810-225-2222

Sales @neptechinc.com